



20 YEARS' EXPERIENCE

HYDRAULIC HOME LIFT



Hydraulic Wheelchair Lift

wheelchair lift is widely used to lift person between different floors of the home, villa, hospital or bank.

It provides fast, efficient, convenient and safe access to mezzanines, basement, and any levels in multilevel building both indoors and outdoors.

Lifting height: It can be customized according to client's requirement.
Platform size: Standard 1430*1000 mm
Load capacity: Standard 250 kg.

Home Lift Specification

(HS CODE 842890)

Model No.	WL0.25-3.6	
Lifting Height	mm	3400
Platform Size	mm	1430*1000
Dimension	mm	1650*1420*5500
Load Capacity	kg	250
Working Speed	m/min	4
Power Supply	V/Hz/Ph	220/50/1 or customized

Main Configuration

Body Structure	
Work Platform	4mm Tear Plate/Checkered Plate
Material	Aluminum alloy(White powder coating) and tempered glass
Lift Chain	10A Leaf Chain
Paint Plus Rust Removal	Powder Coating and Shot Blasting
Convenient Design For The User	
Sectional Design	Easier for installation and transportation (With removable iron plate)
Control Mode	Inching Switch
Calling Device	Post switch, remote controller also available
Working Condition	Both indoors and outdoors
Safety Device Reliable	
Platform lock	Lock the platform in case of any mis-operation by the children or strangers.
Platform Emergency Stop	The lift can be stopped immediately in case of any emergency
Safety Sensor on the bottom	The lift will be stopped immediately if the safety edge meets obstacles when going down, especially to protect the children if he enter accidentally.
Safety interlock	The lift won't work if the door is open, it can only rise when the door is completely closed.
Automatic door	The door will open and close automatically and will not open during the running

Detail Parts

01 KEY PARTS ALUMINUM ALLOY

Description

1. Whole body is made by Aluminum Alloy with Powder coating.
 2. The aluminum alloy has a great weather resistant, hardness $> 2h$ it suits the temperature ranges from 40°C to -30°C
-



02 KEY PARTS IRON PLATE

Description

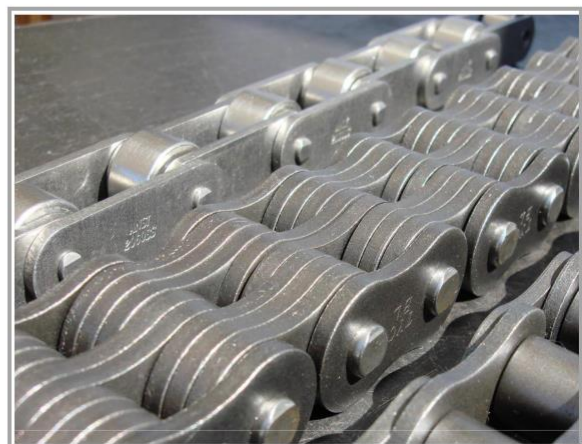
The iron plate that used to connect the lift and wall can be moved on the track, so it can be fixed on the wall at any height you want.

More simple fixation on the wall.

03 KEY PARTS LEAF CHAINS

Description

Leaf chain could bear 10 times weight than rated capacity of wheelchair lift. with such heavy duty features and enduring use-life, it will save cost of the replacement and provide top class safety.



Detail Parts



04 KEY PARTS **ANTI-FALLING DEVICE**

Description

If the chain is broken, the platform can be locked immediately within 0.2s to prevent further decline.

Guarantee the safety of operator.

05 KEY PARTS **HYDRAULIC POWER UNIT**

Description

The hydraulic power unit has incredible features: small, compact structure, lightweight, highly efficient, great working pressure, reliable performance and no leaks.



06 KEY PARTS **HYDRAULIC CYLINDER**

Description

MORN hydraulic cylinder has outstanding features, includes smooth working performance, heavy workload, hard-wearing parts etc.

It is heavy duty with reliable performance and no leaks.

Detail Parts

07 KEY PARTS HYDRAULIC OIL PIPE

Description

Hydraulic oil pipe: high pressure pipe with double expanded metal protected.

Good resistance to oil, water and high pressure, with wear resistance and tensile properties.



08 KEY PARTS POST SWITCH CONTROL

Description

The switch is hierarchical controlling. Platform can be called at each level of floor. It brings working more efficiency.

09 KEY PARTS PLATFORM CONTROL

Description

Operator can operate the wheelchair lift inside of the platform.

Key lock: Lock the platform in case of any mis-operation by the children or strangers.



10 KEY PARTS REMOTE CONTROL

Description

The remote control can control the platform within 10 meters. It brings convenience to the operator.

Detail Parts

11 KEY PARTS MANUAL DOWN

Description

Platform can be lowered by manual down button in case of power failure.



12 KEY PARTS SAFETY SENSOR

Description

The lift will be stopped at once if it touches any obstacles when going down, especially to protect the children if he enter accidentally.

13 KEY PARTS LIMIT SWITCH

Description

DELIXI brand or equivalent brand limit switch. Setting the lifting height and working as key part of interlocking system.



14 KEY PARTS ELECTROMAGNETIC LOCK

Description

The lift won't work when the door is opening, the lift can rise if the door is completely closed.

Guarantee the safety of operator.

Detail Parts

15 KEY PARTS TEMPERED GLASS

Description

The cabin made by tempered glass material. Strong and beautiful.



16 KEY PARTS FREQUENCY CONVERTER

Description

According to the actual needs of the motor to provide its required supply voltage, and then achieve the purpose of energy-saving speed regulation.

OPTIONAL PARTS

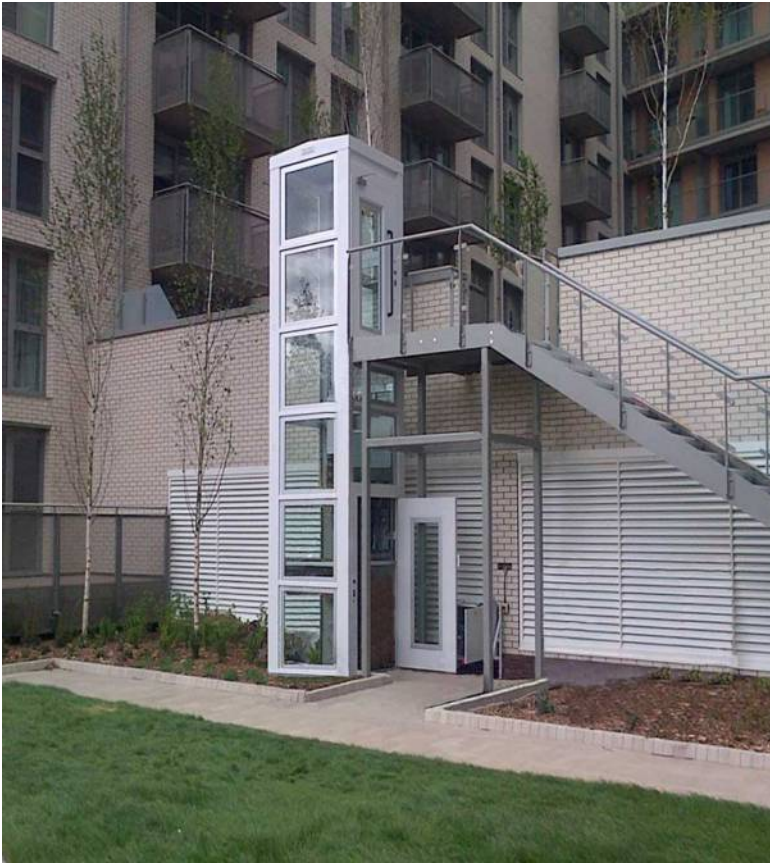
17 PUMP STATION CABINET

Description

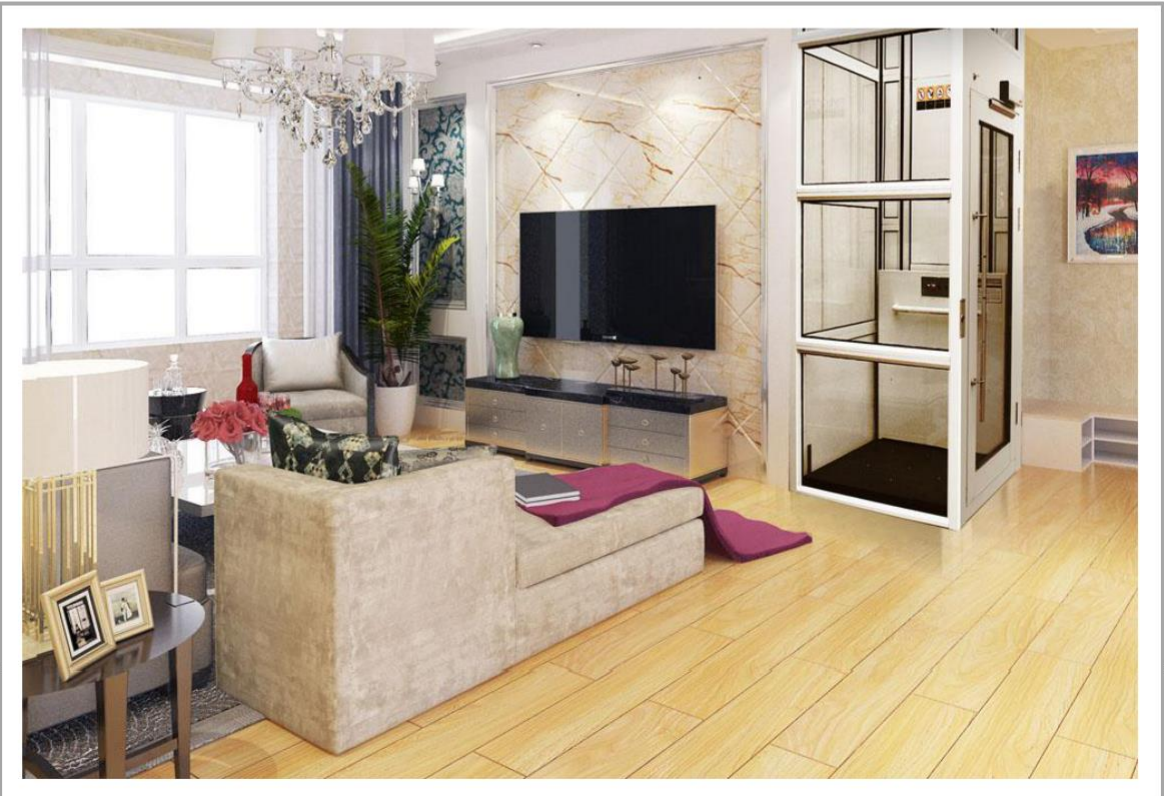
IF the lifting height over 6m. The pump station will be separated place. So there will be a cabinet to protect the pump station.



Project Case



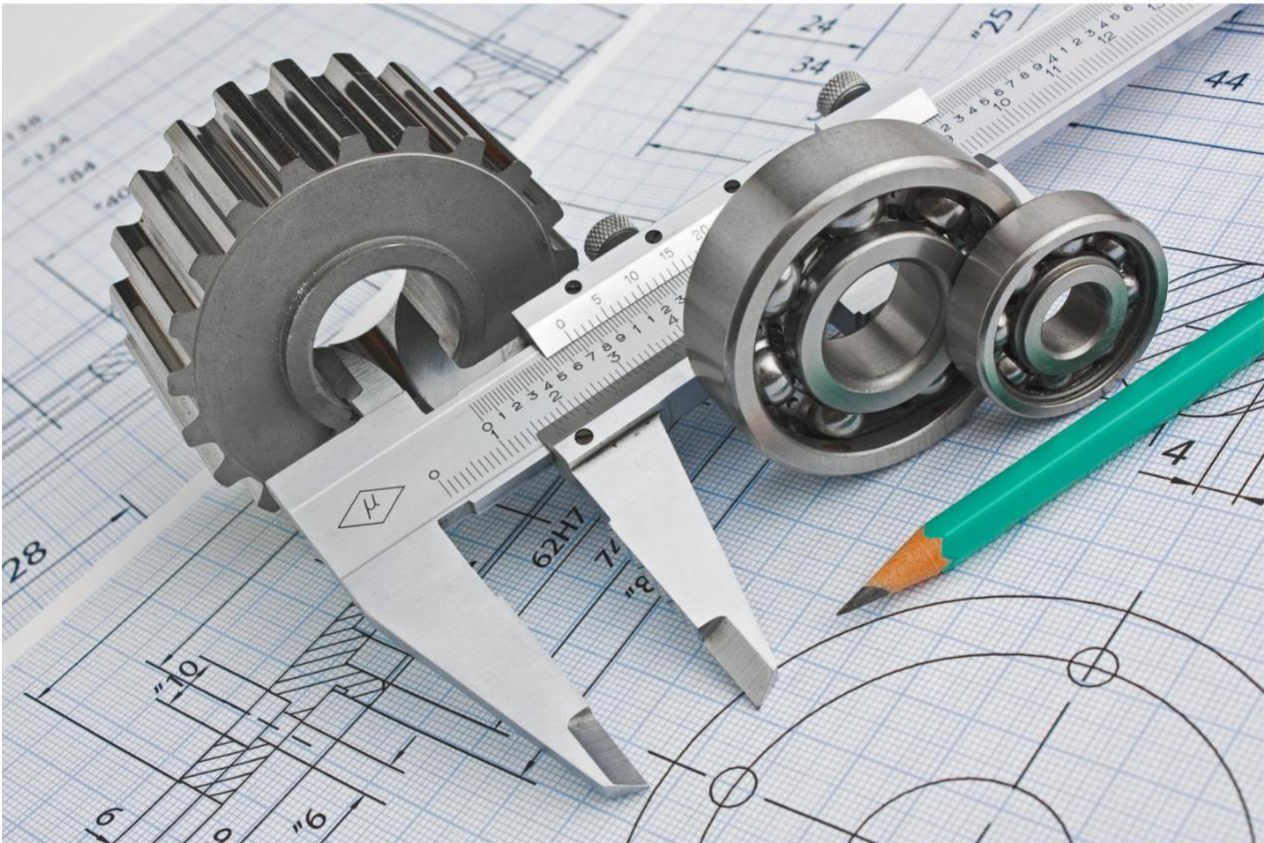
Project Case



Safety&Warranty

Safety Feature:

- ✓ **Limit Switch:** Two units of travel switch are installed at the highest point as insurance.
- ✓ **Explosion-proof Valves:** Prevent from the hydraulic oil leak out if hydraulic pipe fracture.
- ✓ **Spillover Valve:** It can prevent high pressure when the machine moves up. Adjust the pressure.
- ✓ **Manual Down Device:** It can go down when you meet an emergency or the power off.
- ✓ **Platform:** Anti-skid surface with checkered plate surface.
- ✓ **Duo-Security:** High strength plate chain and wire rope, ensure the lift is safe for using.
- ✓ **Safety Factor:** 125% Overload guarantee.
- ✓ **Anti-Falling :** Prevent platform from unexpected falling if any accident happen.
- ✓ **Electromagnetic Lock :** Lift works only if door fully close.



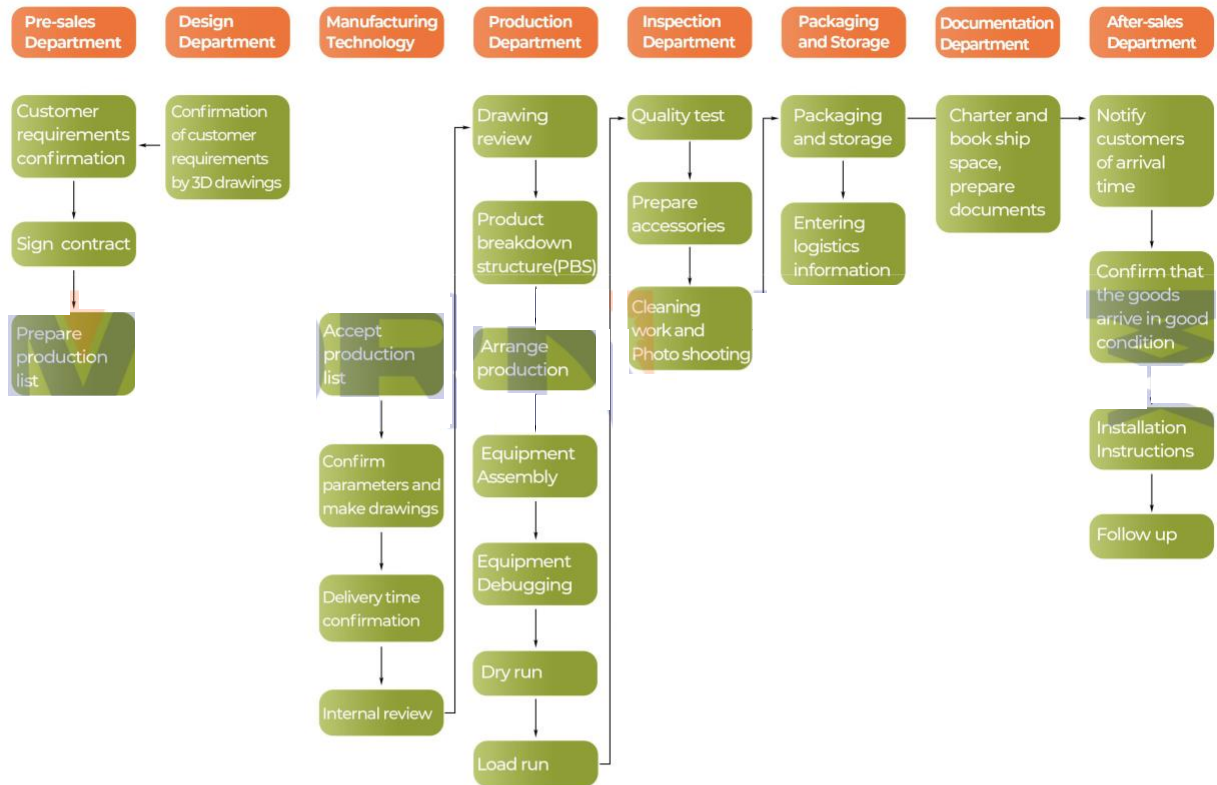
Warranty:

- ✓ User-friendly English installation and maintenance manual available.
- ✓ Five-year warranty for main structure apart from man-made fault.
- ✓ Free parts available if there are any non-human factors problem within first year.
- ✓ 24-hours technical support by email, phone or other communication online.
- ✓ 3 years warranty range including: electric control box and electrical apparatus, elements, push buttons, hydraulic motor and motor parts, limit switch, hydraulic cylinder, oil tube and oil seal.

Disclaimer: The damage is caused by force majeure, artificial or accident; during the transportation, delivery, storage, defect and damage caused by improper operation or loading. Accident caused by improper operation or do not did the daily maintenance and adjustment.

Quality Control

Internal Quality Control



Certification

